



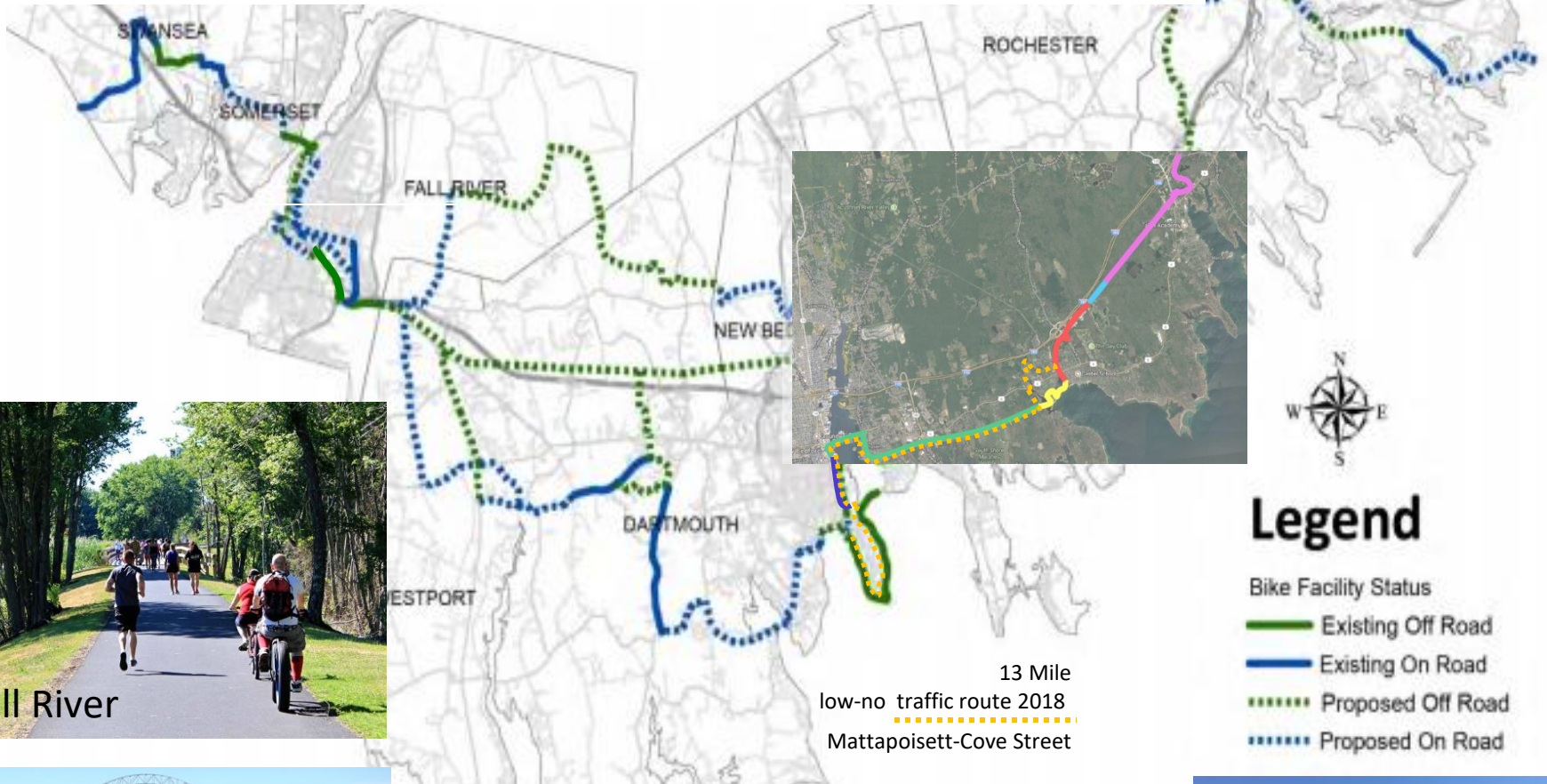
Friends of the Bike Path Fundraising

The Marion Connection

Connecting
**MARION, MATTAPOISETT,
& FAIRHAVEN BY BIKE**

Over view of the Bike Path Route
From New Bedford to Marion

Mattapoissett Rail Trail is part of a regional plan for bike paths and bike routes that will connect Rhode Island to the Cape Cod Canal. Segments of the route are complete in New Bedford and Fall River.



MATTAPOISETT RAIL TRAIL WILL BE EXTENDED IN 2019

MARION PATHWAY IS SCHEDULED FOR 2020

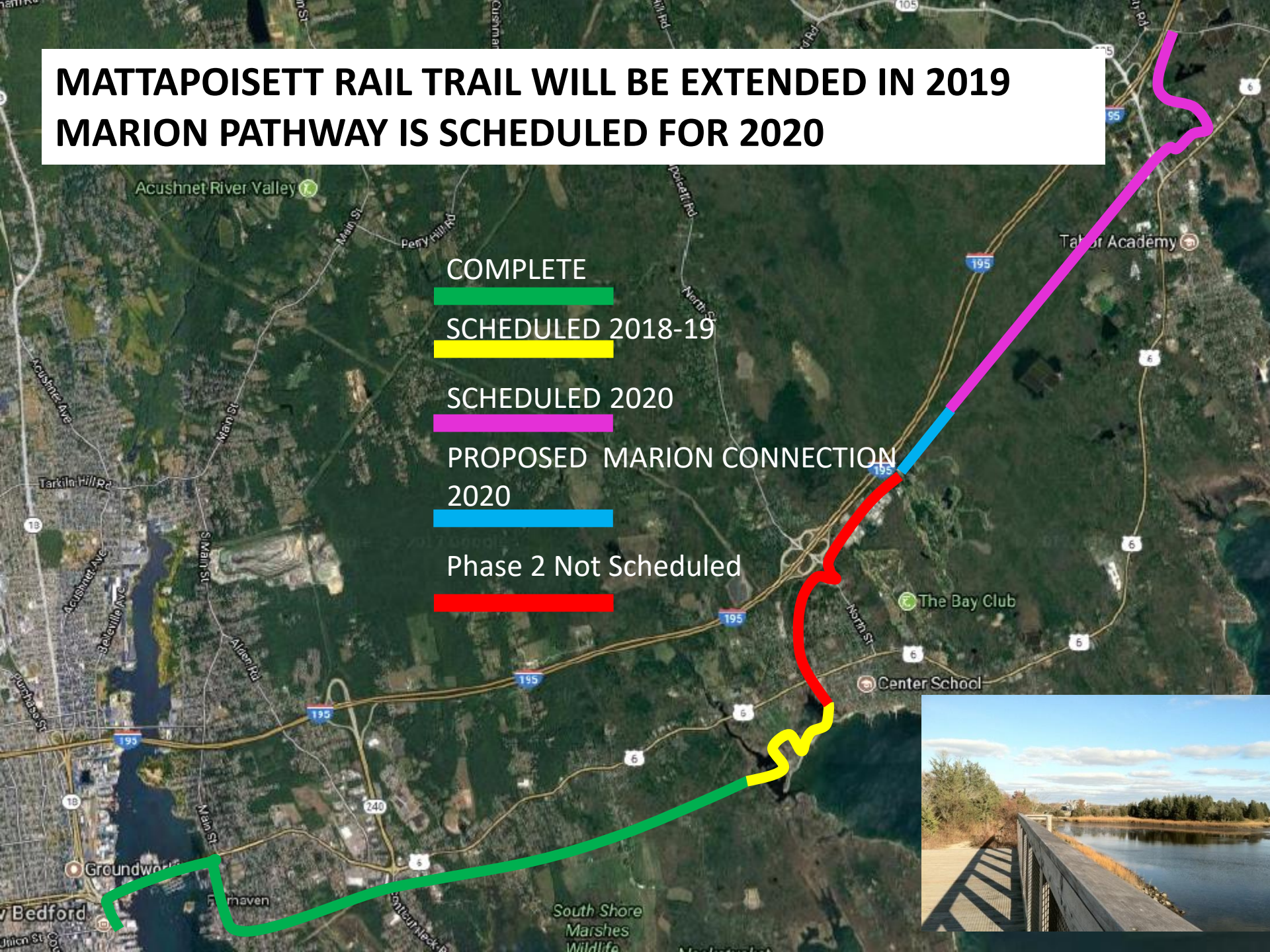
COMPLETE

SCHEDULED 2018-19

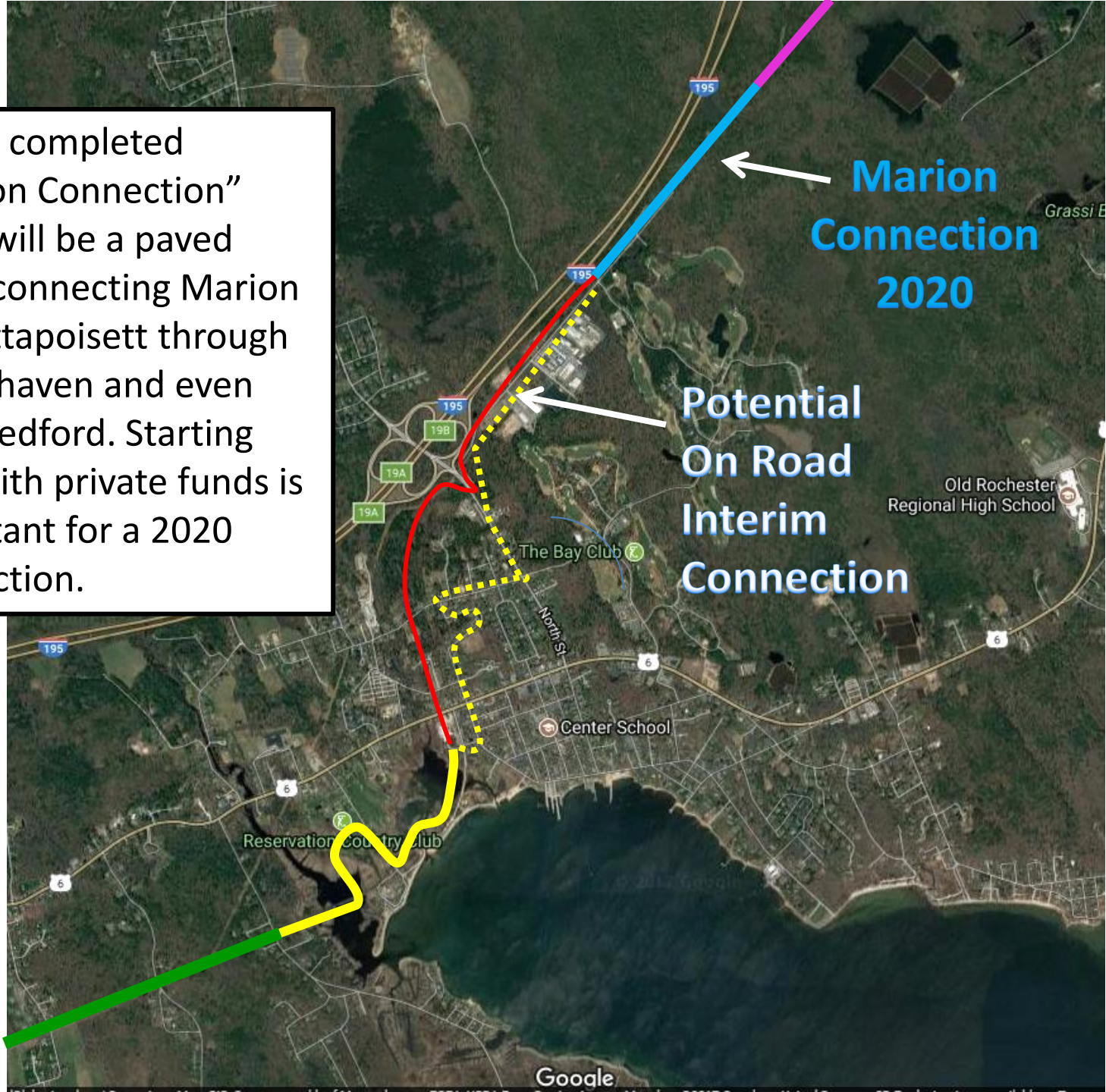
SCHEDULED 2020

PROPOSED MARION CONNECTION
2020

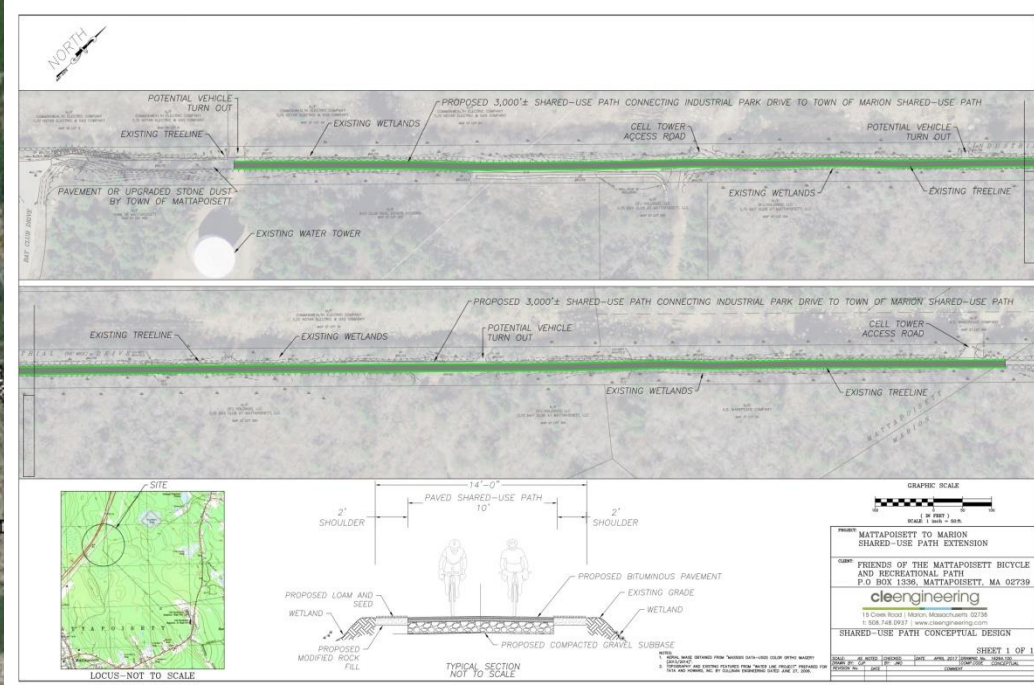
Phase 2 Not Scheduled



With a completed "Marion Connection" there will be a paved route connecting Marion to Mattapoisett through to Fairhaven and even New Bedford. Starting now with private funds is important for a 2020 connection.



A Concept Study was funded and completed in 2017



Next Steps

1. Raise funds for complete construction documents.
 - a) Goal \$50,000 October 2018.
 - b) Sources: grants, foundations, Tour de Crème, other.
2. Develop an agreement with the Town about the process
3. Confirm projected construction cost and ability to privately raise that amount.

Friends of the Bike Path Fundraising

The Marion Connection

Thank you for your interest

Check Donations:

Friends of the Bike Path

PO BOX 1336

Mattapoisett MA 02739

Online:

<https://www.gofundme.com/Matt-Rail-Trail>

Volunteer or Contact Us

Bonne DeSousa

bdesousa 43@comcast.net